

# BUILDING TOGETHER

## JULY 2025



### Building with Purpose: How EV Construction Strengthens Communities



Lately, we've been emphasizing the importance of clearly communicating a project's purpose to ensure it stays top of mind for everyone involved. When we highlight how each project impacts the community, it becomes more relatable and meaningful, making it easier to inspire our teams and foster a strong sense of shared commitment.

At EV, we believe that understanding the why behind our work is just as important as the work itself. Whether it's onboarding a new team member with no construction background or awarding a contract to a trusted trade partner, we always start with purpose.

You often hear us talk about the why when it comes to safety, and for good reason. Following safety protocols isn't just a requirement; it's how we protect one another and ensure everyone makes it home safely at the end of the day. But the why goes beyond safety.

It's also about the larger mission behind each project. When that mission is clearly understood and genuinely embraced, it elevates quality, attention to detail, and team morale across the board. A church renovation is more than just a construction project – it is giving people a place to feel at peace and protected in times of need. A behavioral health facility is more than a flashy architectural feature – it is a haven for families when they feel hopeless. A retirement community is more than residential dwelling units – it is a new, and often final, home for aging parents. When you can see beyond the wall types and specified plumbing fixtures on any given project, it gives the project teams building these facilities a sense of greater purpose.

A recent experience at Helen DeVos Children's Hospital reminded me just how powerful and thoughtful construction can be. As the parent of a 4-year-old daughter with significant disabilities, we're frequent visitors to the hospital. During one of our visits, we walked through a temporary corridor installed by another general contractor.

As someone in the industry, I immediately noticed the quality of their work—drywalled, painted, well-lit, clean, and clearly marked for safety. It blended seamlessly into the hospital environment, reducing stress and confusion for patients and families who are navigating the space. I was so impressed, I reached out to the Corewell Facility Director to share positive feedback about a competitor.

It was a great reminder that construction isn't just about building - it's about the experience we create for the people who use these spaces. At EV Construction, this is the standard we hold ourselves to every day.

All our projects at EV impact the community in one way or another. They shape the lives and daily activities of people for generations to come. Every beam, every brick, every project reflects our belief that construction can change lives. Whether it's fostering healing, offering protection, creating connection, or supporting care, our work goes beyond buildings. At EV Construction, we are proud to be building with purpose—because we know when we build better, communities thrive.

Sincerely,

*Layna O'Connor*

Director of Self-Performed Management



Upcoming Dates to Note



- August 13 | Safety Meeting
- September 1 | Labor Day - EV Construction Closed
- September 10 | Safety Meeting
- September 18 | ABC Western Michigan EIC Awards
- September 23 | Field Manager Meeting

Check for more information on EVinsite!



We're Hiring

Help EV find your new coworkers!  
Our open positions include:

**Office:**  
Project Manager  
Director of Preconstruction

**Field:**  
Carpenter  
Sitework Operator  
Firestop Technician  
Interiors

Welcome to EV!



Noah Ayers  
Firestop Technician



Ryan Bouwman  
Interiors Foreman

EV Projects Submitted for Excellence

We're excited to announce that three EV Construction projects have been submitted for ABC Western Michigan's Excellence in Construction (EIC) Awards! These awards honor the highest quality construction work in the region, judged against top projects in each category. This year, we've entered:

- Resthaven – The Farmstead (New Construction \$50–100M)
- Lakeshore Advantage – The Next Center (New Construction \$5–10M)
- UHS & Trinity Health MI – Southridge Behavioral Hospital (New Construction \$25–50M)

We're proud of the teams behind these outstanding projects and look forward to the results this September!

Check out all of this years project submissions [here](#).



Congratulations!

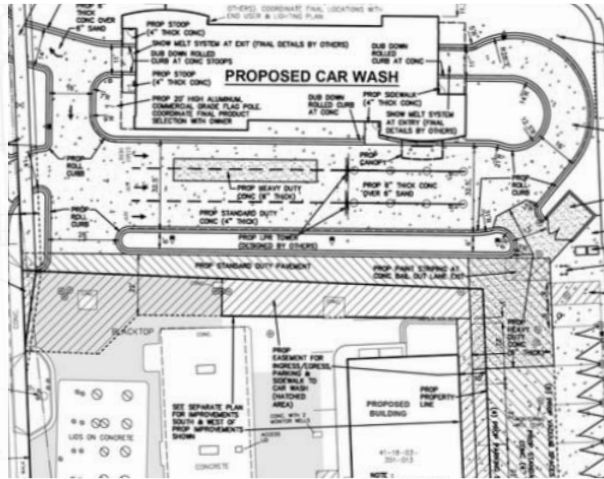
We're proud to share that George Martinez, Foreman in EV's Painting Division, has been named a nominee for Craft Professional of the Year by ABC Western Michigan. Known for his expert craftsmanship, commitment to safety, and mentorship in the trades, George continues to raise the standard on and off the project site. We're excited to celebrate this well-deserved recognition with him at the Excellence in Construction Awards on September 18!

Construction Terminology

Topping Out

Topping out is when the uppermost beam, steel, or beam member is laid in place, signifying that a building has reached its height. It is also referred to as topping off, and a ceremony is sometimes held to celebrate this milestone.

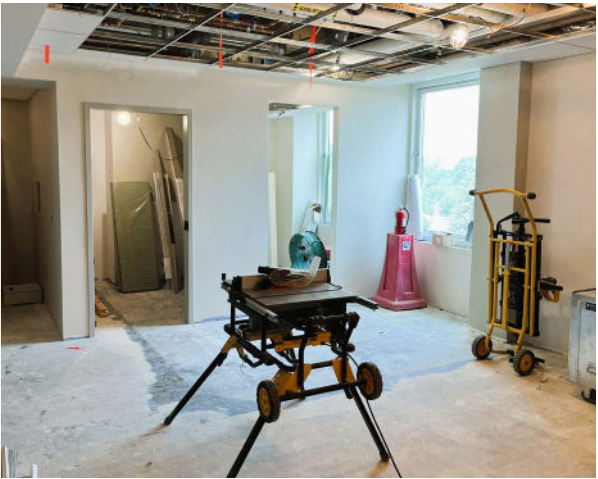
RECENTLY AWARDED



Tommy's Express Breton & Burton - New Construction  
Grand Rapids, MI

- Project Executive:** Jordan Gougeon
- Field Manager:** Ben Frederick
- Project Description:** This Tommy's Express, which will be very similar to other locations, will be located at the busy corner of Breton and Burton in Grand Rapids. The site is very tight and will be a challenging build!
- Self-Perform Trades:** General Trades, Facilities Services Division, Interiors, and Painting
- Project Budget:** \$2.5M
- Project Schedule:** We hope to start before Labor Day and anticipate an eight month schedule.

UNDERWAY



Holland Hospital - Wound Clinic - Renovation  
Holland, MI

- Assistant Project Manager:** Julie Cole-Bouwens
- Field Manager:** Justin Gould
- Project Description:** The project involves renovating the existing library space on the third floor of Holland Hospital to create a new Hyperbaric Chamber Room, along with upgrades to the adjacent support spaces. The scope also includes oxygen bulk tank enhancements and the installation of a dedicated 2-inch oxygen line running through the hospital to supply the new chamber.
- Self-Perform Trades:** Demolition, Faming, Drywall, Firestopping, and Painting
- Project Budget:** \$900,000
- Project Schedule:** June, 2025 - October, 2025

UNDERWAY



Reed City Wastewater Treatment Plant - Improvements  
Reed City, MI

- Senior Project Manager:** Curt Hielke
- Project Manager:** Harry Sadler
- Field Manager:** Brian Locke
- Project Description:** Crews are currently installing air, gas, water, and cloth disk filter piping in the new Tertiary Building. An existing equalization tank is being drained to install a new Enviromix air system and core holes for new piping, improving circulation and enabling flow through the new Headworks Building. Meanwhile, the EV sitework team is completing the installation and tie-in of the final underground structures across the property.
- Self-Perform Trades:** General Trades and Sitework
- Project Budget:** \$23.0M
- Project Schedule:** September, 2023 - January, 2026

WRAPPING UP



Corewell Health Zeeland MOB - Phase Change  
Zeeland, MI

- Senior Project Manager:** Jared Andersen
- Project Manager:** Harry Sadler
- Assistant Project Manager:** Julie Cole-Bouwens
- Field Manager:** Brian Englishmen
- Assistant Field Manager:** Chase Weatherell
- Project Description:** The Corewell ZCH Medical Office Building project recently completed phase two, which included a 15,000-SF addition, and renovations to the existing first and second floors. The updated space now supports outpatient rehabilitation and family medicine services. This phase also encompassed major site work, utility upgrades, exterior concrete, and paving.
- Self-Perform Trades:** General Trades, Firestopping, Interiors, Painting, Sitework, and Utilities
- Project Budget:** \$20.5M
- Project Schedule:** February, 2024 - October 2026 (All Phases)

# Thrive Together Pulse - Prioritizing Eye Health for Safety and Wellbeing

At EV Construction, safety begins with clear vision. Our July safety meeting centered on a vital, yet often overlooked, component of overall wellness—eye care. The session, anchored by the "Thrive Together: Eye Care" presentation, brought to light key statistics and strategies that can help every team member see—and feel—their best.

## The Eye-Opening Truth About Vision Correction

Did you know that nearly 70% of U.S. adults need vision correction, yet a staggering 75% of those individuals go without the glasses or contacts they need? For many, cost and access are the primary barriers.

Vision needs evolve over time, and the numbers tell a compelling story: while only 30% of young adults aged 18–24 require glasses, that figure leaps to 75% for those over 45. These changes are driven in part by age-related conditions like presbyopia, a gradual loss of the eye's ability to focus on nearby objects that typically begins after age 40.

## Proactive Eye Care is Preventive Health Care

The meeting emphasized the importance of regular eye exams—not just for clear vision, but as a critical health and safety measure. Early detection through affordable exams can identify both vision issues and underlying health conditions. For EV team members, vision care isn't just encouraged—it's supported. Here's how you can maximize your benefits:

- Use VSP Premier Program providers: Receive extra perks like a \$20 frame allowance boost and up to 40% off lens enhancements.
- Stretch your frame allowance: Apply your \$130–\$150 allowance and get 20% off any cost over that limit.
- Tap into your HSA: Funds can be used for glasses, contacts, and even Lasik procedures.
- Claim rebates: Brands like Acuvue offer rebates that can significantly reduce costs.
- Schedule a \$10 WellVision exam: It's a small investment that can lead to major health insights.
- Shop smart: Retailers like Zenni Optical provide stylish, affordable frames.

## More Info:

For more information, check out:

[Thrive Together - Eyecare Presentation](#)

## Health Tip Reminders

(We will keep an ongoing list from past posts.)

1. [TytoCare Medical Exam Kit](#)
2. [Wellness Drinks](#)
3. [Sleep Center: Putting Your Sleep Issues to Rest](#)

## Safety First, Always

Workplace safety depends on clarity—in communication and in vision. EV Construction reinforces this commitment by offering up to \$100 reimbursement for prescription safety glasses. It's a clear reflection of how seriously we take your health on and off the project site.

Be well—and see well, Scott McConnelee

## Our Third Annual Future Builders Event Was a Success!

